

# windream for SharePoint



**Additional value for SharePoint-users**



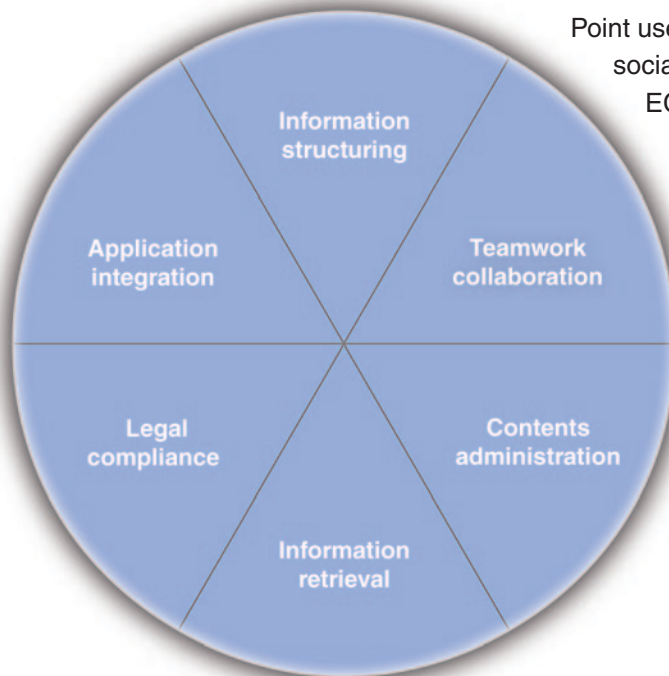
# windream for SharePoint expands Microsoft's SharePoint Server by powerful ECM-functions

**With Microsoft SharePoint Microsoft offers a server application for collaboration, which has mainly been designed for administering unstructured information and for the cooperation of users in enterprises. However, an effective management of huge information volumes and document archives with the SharePoint Server will quickly become problematical, if e.g. specific documents must be administered, archived and retrieved in complex document volumes. Unless SharePoint-users use windream!**

**With windream for SharePoint**, windream GmbH now offers Microsoft SharePoint-users a powerful ECM-integration with storage management, life-cycle administration and an integrated archiving functionality.

## Secure document storage in windream

Developed by windream GmbH, the solution for Microsoft SharePoint Server extends SharePoint by a reliable, solid and easy to handle ECM-platform. With windream for SharePoint, SharePoint-users save their documents as usual via the SharePoint user interface. However, the documents and the associated file properties will be saved in the windream ECM-system directly after they have been created via SharePoint.



After the documents have been stored in windream, users can still further edit, administer or also archive all SharePoint-objects any time. After having been saved in windream, the documents are accessed via the SharePoint-interface directly. This means: Users can continue their work in SharePoint as usual.

## Extended range of functions

The windream integration extends the SharePoint Server by a complex storage management module with integration options for any common storage provider. It allows users to implement different storage solutions, such as RAID, NAS and SAN.

windream for SharePoint can be integrated into an existing IT-infrastructure quite easily and can be extended to a complete information life-cycle management system, which even allows users to define and apply individual life-cycle rules for documents. With the integration of the windream ECM-system into SharePoint, users will thus get a substantially expanded range of functions.

## Efficient retrieval options

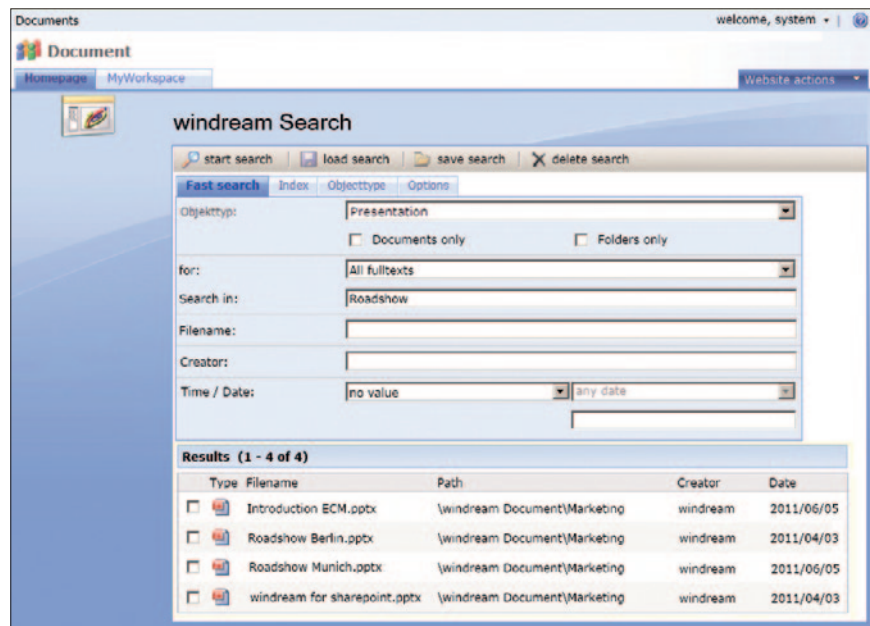
Any SharePoint-document saved in windream can be opened via the SharePoint-application from windream conveniently. The system does not only save the binary files – meaning the actual documents – but also the associated metadata, such as indices, document histories and versions. This ensures that SharePoint-documents saved in windream can be made available and retrieved very easily.

On the one hand, users can apply the usual SharePoint Find function for document retrieval. On the other hand, users can also start the easy to handle windream retrieval application directly from the SharePoint-interface. It allows users to work with different retrieval options like a quick search or a search operation via indices and object types.



### Facts:

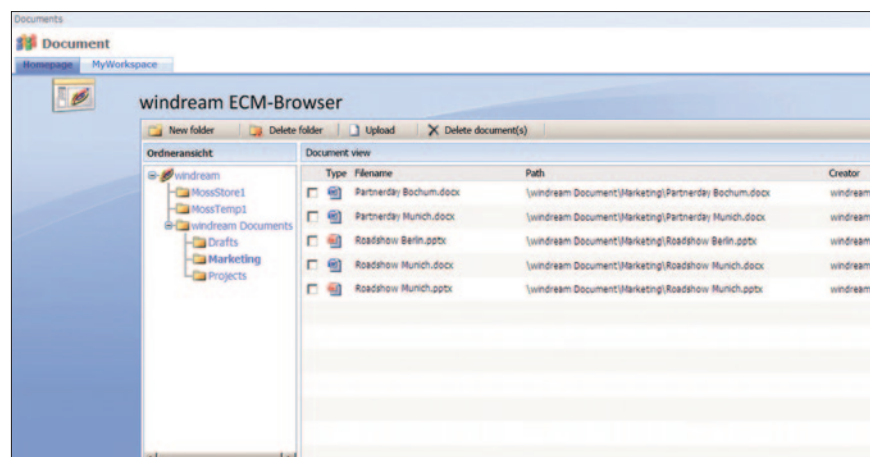
- Completely transparent and uncomplicated integration of the windream ECM-system into Microsoft SharePoint Server
- Hierarchical storage management and life-cycle administration
- Secure storage of all SharePoint-documents in windream – directly from the SharePoint-interface
- Quick access to information
- Editing and changing the SharePoint-documents and metadata saved in windream from SharePoint at any time
- No performance loss in case of increasing data volumes
- Load removal for the SharePoint-database



windream retrieval module in SharePoint

Besides SharePoint-specific information, all other documents which have been saved outside the SharePoint-environment in windream can of course be retrieved, too.

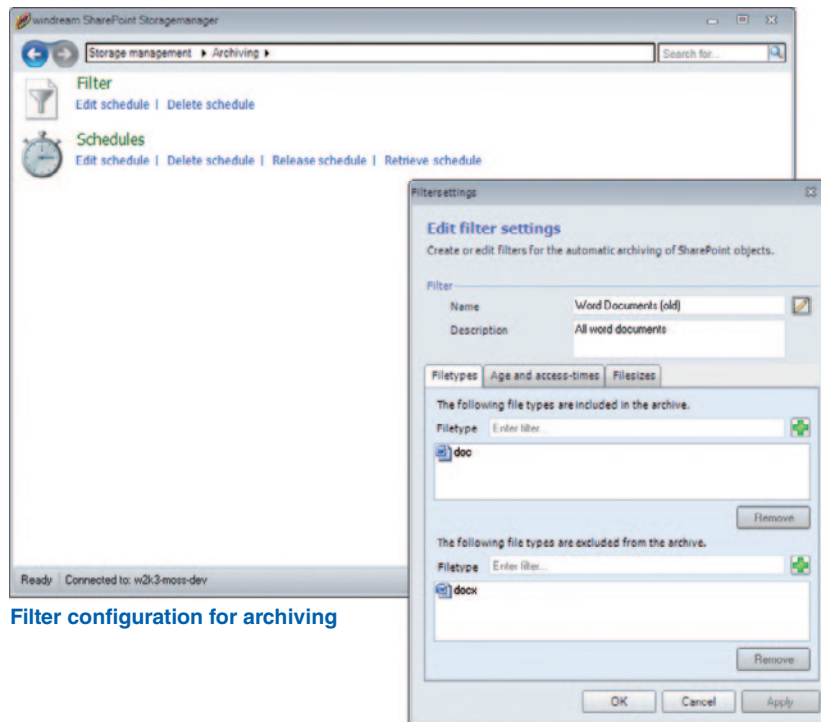
Via an optional component of the windream-SharePoint solution, users can additionally start the windream ECM-browser. This Explorer-like application offers a transparent sight on the filing structures of the windream drive with all documents which have been saved in windream via the SharePoint-interface. Further on, all documents and folder structures of the windream drive can be viewed which have not been created via the SharePoint Server.



windream ECM-browser

## Numerous configuration options for archiving

The archiving processes of the SharePoint-documents in windream can be configured individually via an integrated administration tool. This way, it is e.g. possible to archive documents automatically according to defined rules, and you can also determine the types of documents to be archived or define filters and schedules.



Filter configuration for archiving

Further on, users can also archive documents according to the age of documents, according to the date of last access or according to the file size. If required, documents can also be archived manually via a respective context menu command of the SharePoint-interface – independent of schedules and filters. After an archiving process has been executed, the respective documents cannot be edited any more, neither in windream nor in the SharePoint-application.

## Load removal of the SharePoint Server

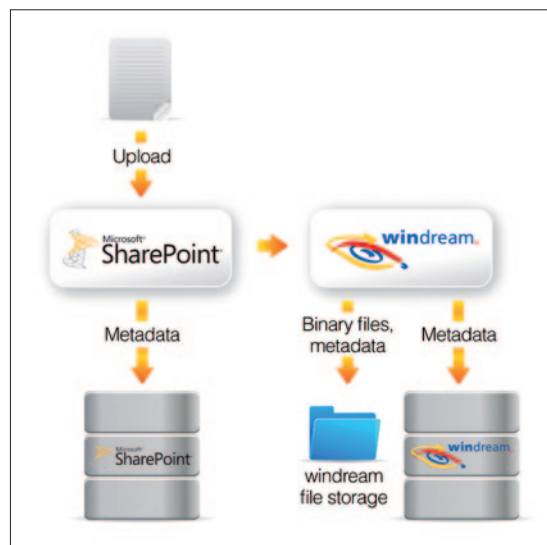
A basic advantage of the windream integration into Microsoft SharePoint is that users are not bound to the technical restrictions of the SharePoint-database any more. Instead, documents can now be saved in windream and administered via the SharePoint Server quite conveniently and completely independent of their respective size or number.



This will remove the SharePoint Server load substantially, which will again help to avoid performance problems and a possible system inconsistency in case of increasing data volumes. On the other hand, this also means that windream – independent of increasing document volumes – ensures a secure and powerful document availability at any time.

## Additional value for SharePoint

With windream for SharePoint, we offer a powerful tool which combines the advantages of the SharePoint Server with the convenient functions of the windream ECM-system. An existing IT-infrastructure can thus be expanded to an integrated ECM-platform on the basis of the SharePoint Server.



Storage architecture with windream

Especially teams, departments and workgroups in companies that have either been using Microsoft's SharePoint Server already or who plan to install SharePoint gain profit from the advantages of this solution. And they can save all documents in a secure and reliable ECM-system simultaneously.



## Features

### General features

- Uncomplicated implementation of the windream ECM-system in SharePoint
- Load removal for the SharePoint-database
- No further programming efforts required
- Quick access to all archived objects
- Editing and changing documents and metadata from SharePoint at any time
- Solid performance even with increasing data volumes

### Capturing functions

- Creation of documents in the SharePoint-environment directly
- Ad-hoc storage of documents in windream
- Automised capturing and administration of associated metadata

### Editing functions

- Editing and changing SharePoint-documents and metadata saved in windream possible any time
- Transparent access to filing structures via the integrated windream ECM-browser

### Archiving functions

- Secure archival of all SharePoint-documents in windream – directly from the SharePoint-interface
- Convenient configuration of the archiving options with the integrated Storage Manager
- SharePoint document storage with filter functions and schedules, based on definable rules
- Manual archiving possible
- Configuration of individual life-cycle rules to determine the archiving period
- Integration of different storage systems and convenient storage management
- Optional solution extensions for complex information life-cycle management

### Retrieval functions

- Document retrieval directly from the SharePoint-interface
- Support for all retrieval functions of the SharePoint Server and of the windream ECM-system
- windream retrieval as quick search, object type search and index search
- All windream objects are also retrievable from outside the SharePoint Server



## Rely on the Technological Market Leader

If you plan to invest in an innovative, efficient and easy to handle ECM-system, or if you need further information on how to optimise your business processes concretely, we should get to know each other.

In the market sector of ECM-software suppliers, windream GmbH is the technologically leading manufacturer. With the windream ECM-system based on the patented Virtual File System technology (VFS), we have created an unrivaled tool for administering your complete company knowledge. Our software is easy to handle, effective, and future-proof. We have 20 years experience in successful software solutions development for enterprises of any size. Medium-sized companies and multinational corporations as well rely on our top quality products and on our technological know-how.

**Look and see!**



**windream GmbH**

Wasserstraße 219  
44799 Bochum  
Germany

Phone: +49 234 9734-0  
Fax: +49 234 9734-520  
E-Mail: [info@windream.com](mailto:info@windream.com)

[www.windream.com](http://www.windream.com)

**Managing  
Documents**