

windream
bizhub connect



**The seamless connection between
Konica Minolta bizhub systems
and windream**



The seamless connection between Konica Minolta bizhub systems and windream

You are using the multi-function devices of the market leader Konica Minolta and want to archive scanned documents unalterably? You want to provide your co-workers with direct reports on the files entered at the bizhub, informing them that the scanned paper documents can be destroyed? Or do you have to handle other tasks concerned with scanned documents? – Whether in small and medium-sized businesses or in large companies with many locations – windream bizhub connect solves your archiving problems entirely paper-free by connecting any amount of Konica Minolta bizhub systems with the revision-safe windream archive quickly and flexibly.

Market-leading technology and functionality

With regard to versatility and functionality the systems of the Konica Minolta bizhub series are market-leading. In the basic version already, they offer a wide variety of different channels for communication. An extremely flexible port with the name OpenAPI is integrated into every system. Via this port, bizhub systems can be combined with further applications and can even be controlled by them.

OpenAPI guarantees that the user can continue to use the familiar „Look and Feel“ – however, with increased functionality. This is especially important in the context of interactive processes, for example during the scanning of documents. Generally, there are two different functional areas in the interaction between bizhub users and OpenAPI:

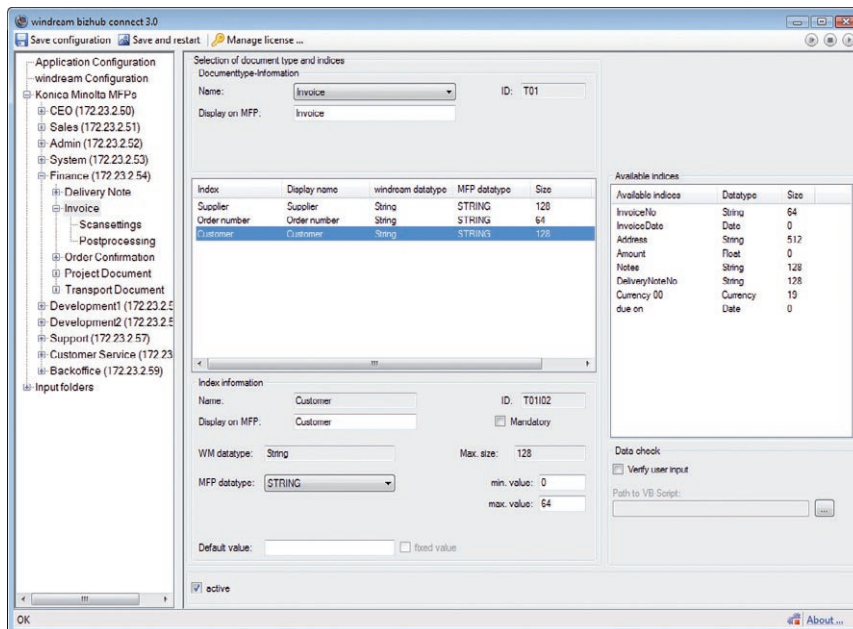
- information input at the bizhub device via the user, and
- reports on external activities via the system to the user.



windream bizhub connect represents the ports between both worlds and supports both functional areas. Additionally, it offers a flexible processing of the received information and documents before passing them on to the respective other system.

Each bizhub individually

In order to present functions user-specifically in the bizhub systems, windream bizhub connect (WDBC) can be configured via an administration component. The configuration can be carried out for all connected bizhub systems uniformly, but also individually for each single bizhub system. Here, single functions or even whole device configurations can be copied and assigned to further systems. Thus, a quick and simple configuration of the entire system is possible.



Configuration of documenttypes with windream bizhub connect

Each user individually

During the configuration, document types in windream are automatically accessed, too. These may have been assigned access rights, e.g. in order to enable only users in certain departments, holding the required rights, to access the respective document types. These access rights are always strictly considered by WDBC.

In order to run the WDBC-functions, an authentication in the system is required, which can be carried out either via a system input or via the usual aids, such as smart cards.

For users without authorized user identification, WDBC automatically uses a general windream user account with correspondingly limited access rights.



Document type selection via the bizhub interface

Flexible input...

At the bizhub device itself, different information such as invoice numbers or supplier names can be entered. For longer entries, the use of previously configured select lists is possible, sparing the user unnecessary entries and keeping the effort of classifying the documents to be acquired at a minimum.



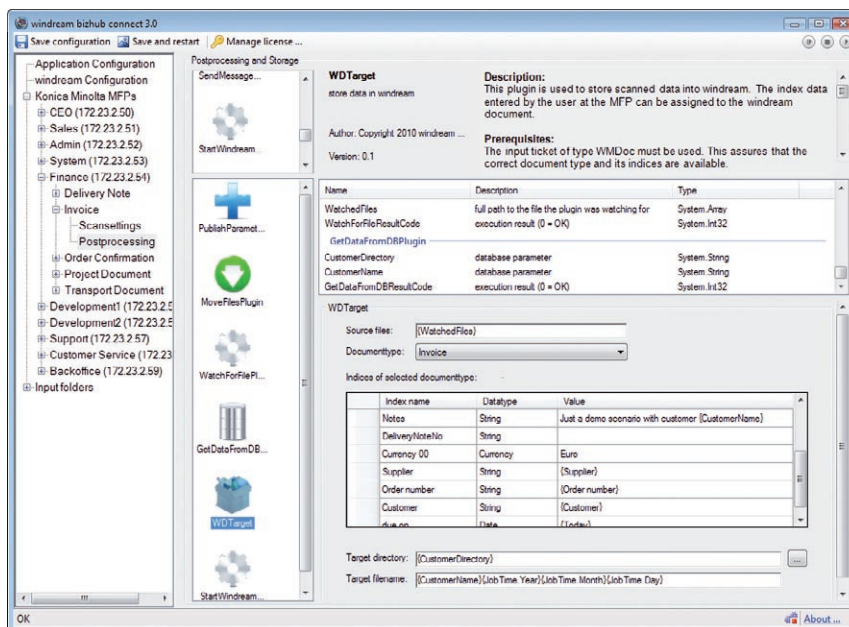
bizhub interface with index dialog

The select lists can be configured manually, but also aligned with existing select lists in windream. If the lists are so long that a well-structured display is not possible, an easily operable find function can be configured, supporting the user in the correct selection of input criteria.

...and efficient further processing

User entries should be checked for plausibility as soon as possible, so that errors can already be identified and eliminated before the further processing of digitized documents. The tedious search for, e.g., a single invoice from the stack of an entire day can quickly result in immense pressure on the employee responsible for this task.

Consequently, WDBC is able to check the information entered for the classification of the respective document before the scanning process already and send a message to the user via the bizhub display, should something be wrong.



Document processing with windream bizhub connect

Intuitive handling of functions

The true flexibility of a WDBC-system shows in the subsequent processing of digitized documents. Outbound functions such as the active sending of e-mails or messages to bizhub systems, the handling of files and the addressing of further sources of information, are complemented by the flexible use of functions for changing documents.

This includes the extraction of text information, the change of formats (e.g. into searchable PDF or PDF/A), the separation of documents according to keywords, blank pages or barcodes, and even the combination of documents.

For example, if an already existing processing path shall be used with a further function, this is absolutely possible. Corresponding plugins are available via WDBC.

The efficient plugin concept

Every customer has unique desires concerning further processing. For this reason, a large selection of functionally complete modules – the so-called plugins – are available with the installation of WDBC. However, the plugin-concept is not only intended for the use of already existing functions. It was developed in such a way that even completely new requirements can be realized in short time. This can be done by windream GmbH, by a partner, or even by the customers themselves.

Completely integrated into windream

The integration into windream is not limited to the simple storage and indexing of scanned documents. It still contains document types and specific ECM-traits in windream, as well as the corresponding select lists and access rights. And the integration goes beyond the familiar controlling of the windream system, up to the sector of working processes. Information and documents can be seamlessly used as starting points for automated working processes in the Business-Process-Management system windream BPM. The configuration of such overall processes can be carried out via drag and drop in a few moments.

Performance traits:

- Device-specific connection of Konica Minolta bizhub systems and windream
- User-specific menus after authentication at the device
- Input of different types of information
- Select lists with find function
- Check for plausibility of input and direct communication with the bizhub user
- Flexible further processing of information and documents like e.g. OCR, format converting, recognition of barcodes, separation and combination of documents
- Consideration of important sources of information for further processing
- Efficient document storage in windream
- Launching of business and working processes directly via the bizhub system
- Reports on system processes directly via the bizhub system

windream bizhub connect – the information node for document processing

Document processing, the collection and evaluation of information, rights-secure archiving, working processes – all this is centrally managed and configured via windream bizhub connect. On the basis of the available plugin technology the system can be individually expanded at any time and with little effort.





Rely on the Technological Market Leader

If you plan to invest in an innovative, efficient and easy to handle ECM-system, or if you need further information on how to optimise your business processes concretely, we should get to know each other.

In the market sector of ECM-software suppliers, windream GmbH is the technologically leading manufacturer. With the windream ECM-system based on the patented Virtual File System technology (VFS), we have created an unrivaled tool for administering your complete company knowledge. Our software is easy to handle, effective, and future-proof. We have 20 years experience in successful software solutions development for enterprises of any size. Medium-sized companies and multinational corporations as well rely on our top quality products and on our technological know-how.

Look and see!



windream GmbH

Wasserstraße 219
44799 Bochum
Germany

Phone: +49 234 9734-0
Fax: +49 234 9734-520
E-Mail: info@windream.com

www.windream.com

**Managing
Documents**